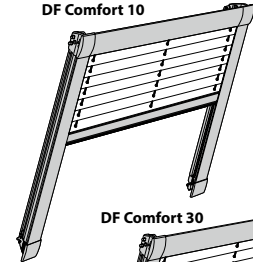


# DF Comfort 10/30

## Montage- und Bedienanleitung

*Assembly and operating instructions  
Notice de montage et mode d'emploi*

**DF Comfort 10**



**DF Comfort 30**



10 / 2014

technische Änderungen bleiben  
vorbehalten

*subject to technical change  
sous réserve de modifications techniques*



# A Montage

Fixation – Montage

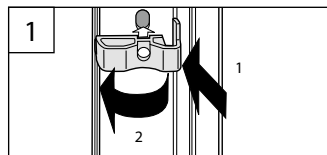
→ **Bitte nur beiliegende Schrauben verwenden!**

*Please use only the enclosed screws! - Veuillez utiliser seulement les vis jointes!*

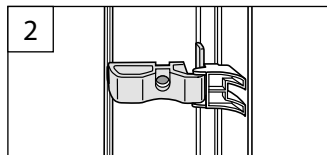
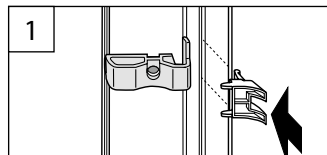


## VORBEREITUNG

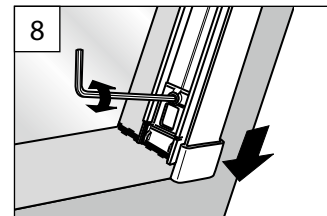
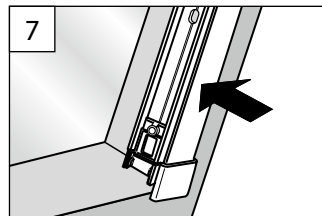
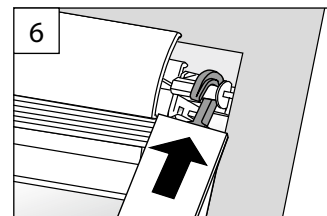
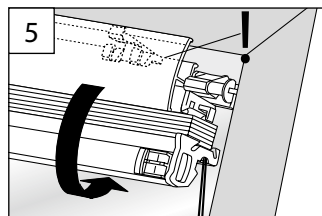
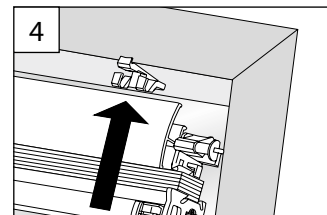
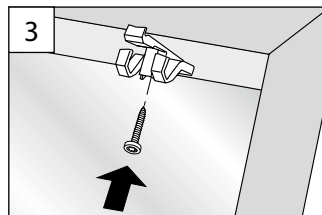
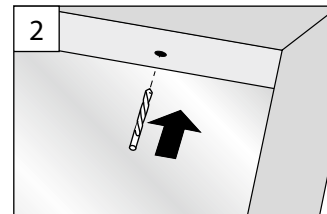
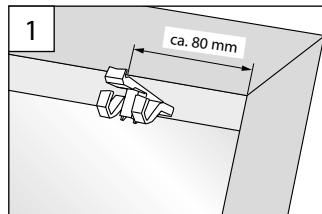
PRÉPARATION – PRÉPARATION



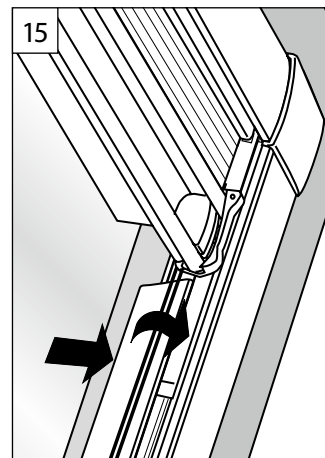
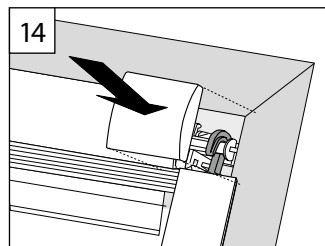
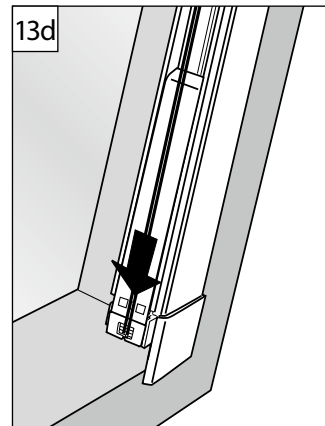
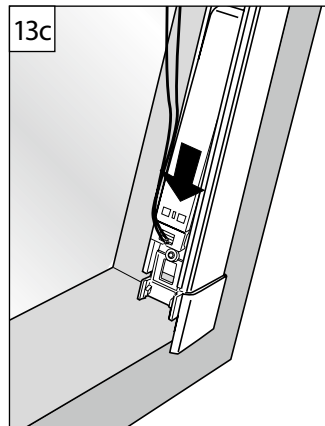
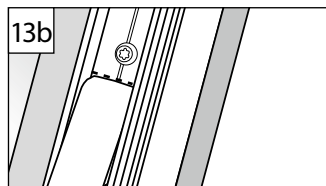
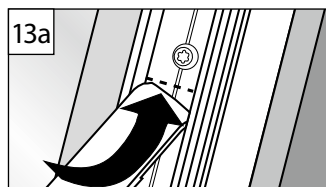
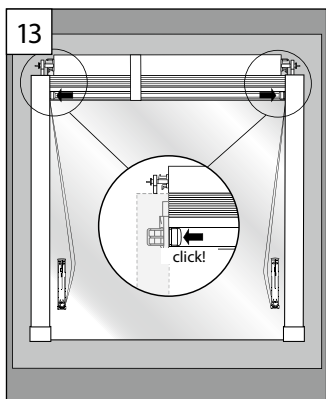
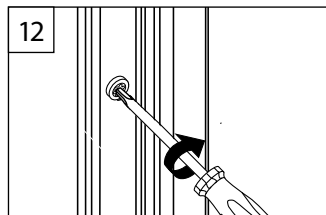
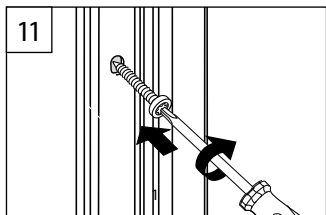
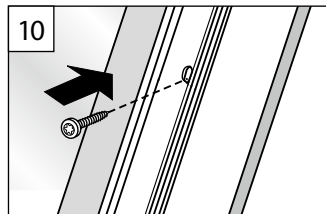
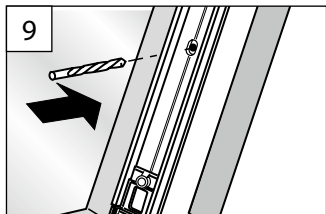
Roto R6., R8..., 6..K, 8..K..

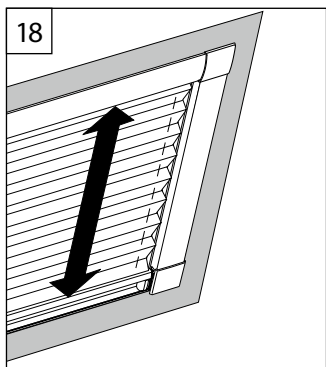
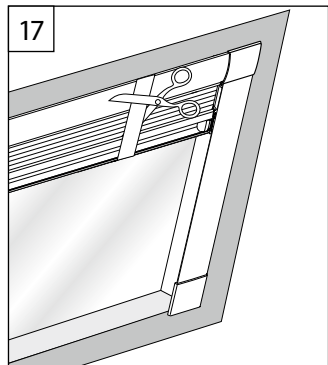
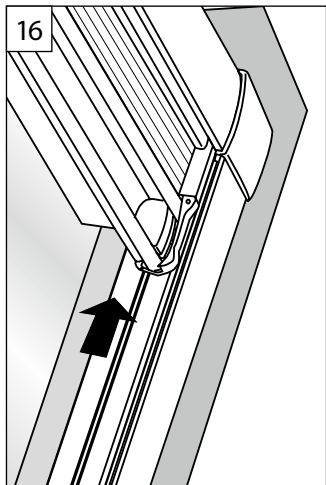


1



2





## B Demontage

*Dismantling - Démontage*

